



Multi Plaza Guide

2026



Multi Plaza Guide



Active Learning Space

Library 1F

Regular Opening Hours

Regularth Period : Weekdays 9 : 00-20 : 00

Spring SummerVacation :

Weekdays 9 : 00-17 : 00

Sat. Sun. Holidays: Closed

※After the opening hours (unattended access) forTUT members are available outside regular hours. However, the library is fully closed (not open after-hours) during the summer break, year-end and New Year holidays, etc. During After-hours opening, possible to entry with your ID card (student ID / staff ID). For the latest opening information, please refer to the calendar on the library's website.

Library Map



Annual Calendar



A place where people meet the knowledge of the TUT is born



The Multi Plaza has spaces where individuals and groups can study. Desks, chairs, and whiteboards can be freely arranged and used as needed. When no events are being held, the area can be freely used for studying and socializing.

Events can also be held in the Multi Plaza. If you wish to organize an event, please submit the "Multi Plaza Facility Usage Application Form." For more details, please refer to "For Those Reserving the Multi Plaza Facility."
https://lib.tut.ac.jp/guidance/event_multiplaza_all.pdf



For other information, please refer to the items below.

Area Information

Collaboration Area Available for event use

【Equipment】 Movable chairs · desks · whiteboards · projector · Screen (PC · DVD connection possible)



You can borrow books from Multi-Plaza Library. Self-service checkout.



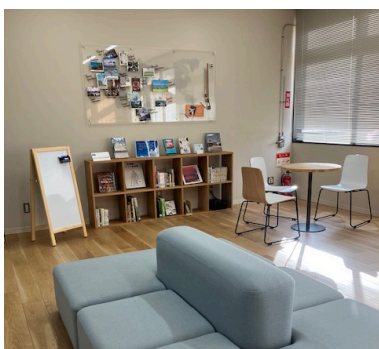
Global Lecture Area Available for event use



Multi Screen Side

【Equipment】 Movable chairs · desks · whiteboard · multi screen (PC · TV · DVD connection possible)

· The multi-screen side and the global lounge can also be used with partitions.

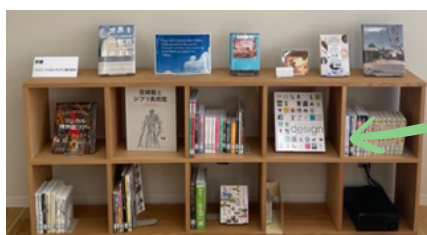


Global Lounge

· The Global Lounge plays ambient music.



You can borrow books from the Global Lounge. For TUT members only up to 2 books for a 14-day loan period. Please complete the borrowing procedure at the counter.



Study Support Area



Available for event use

【Equipment】 Wall-mounted whiteboard

- When used for events, it can serve as a partition between the collaboration area and study support area.

· The outside terrace is accessible from this area.



Workstation Area



【Equipment】 Large monitors, wide-format printers, multifunction machine

· You can freely enter the room on weekdays from 9:00 to 16:50. Outside of these hours, entry requires a student ID or staff ID. The completion of the library usage guidance is necessary.

· Prior application is required to use the large-format printer. Staff need to apply only once, while students must apply each academic year. For details, please refer to the page about large-format printer usage:

<https://lib.tut.ac.jp/guidance/printer.html>

· The multifunction machine is for printing from a PC or USB only. Scanning and copying functions are not available.



Meeting Room 1 • 2

Reservation required



【Equipment】 Large monitor, information outlet

· You can use this not only for internal members of the university but also for various meetings with graduates, honorary professors, and company representatives.

· Please check the availability and make a reservation through the web booking site.

For details, please refer to the page about facility reservations:

<https://lib.tut.ac.jp/guidance/room.html>



Caution



- Smoking is prohibited throughout the building and outside areas.
- In open spaces, please avoid loud voices or noises those may disturb others.
- Do not leave your belongings unattended for long periods or occupy seats for extended times.
- Please manage your valuables yourself. Coin lockers (for same-day use only) are also available.
- Eating is not allowed inside the building. Candy, gum, and chocolate are also considered food.

Please have meals on the deck or under the tent on the north side of the library.

Women's Lounge



Women's Relaxation Room

【Equipment】Sofa · Diaper changing bed · Nursing space · Kitchen sink etc.

Opening hours : 9:00-17:00



Tatami Room

【Equipment】Tatami mat (4 and a half) · Sofa

Opening hours : 9:00-19:45



Women's Dressing Room

【Equipment】Locker (100yen coin return) · Dressing Tabela, Miller

Opening hours : 9:00-17:00



· Usually, you can use the facilities during regular opening hours. Registered users can enter with an ID card (student ID/staff Pass). Anyone can enter the Tatami room with an ID card. For those who wish to use the two female-only rooms but are not registered, or visitors from outside the university, please go to the counter. Registration for use is also accepted.

· If you wish to reserve the space for exclusive use, please submit the "Exclusive Use Application Form" at least one week in advance.

Details: [About using the women's support area](https://equal.tut.ac.jp/data/)

<https://equal.tut.ac.jp/data/>



Information Lounge

· Brochures and pamphlets from our university and various institutions. We have newspapers from the past two months available.

Terrace

· Please use it as a space to refresh yourself in between studying or lectures
· The terrace can be used for both eating and drinking.



*Eat&Drink
Space*



Locker Room

· We have coin-operated lockers that require a 100-yen coin for use each time. The some-day usage only.

Library Counter

- Lending and returning library shelf materials
- Handling various inquiries about the library and materials
- Handing over keys for reservation-based rooms
- Reception for the use of events at the Multi-Plaza
- Lending equipment such as projectors, DVD players, and headphones
- Acceptance of various usage application forms
- Issuing cards for the women's support area
- Acceptance of registration applications / issuing of special cards for elevator use
- Lending umbrellas
- And other related services.

Other Information / Contact Us

<https://lib.tut.ac.jp/guidance/toiawase.html>

Library Information Unit or 1F Library Counter



<https://lib.tut.ac.jp/>
[@tut_univ_lib](https://www.instagram.com/tut_univ_lib)

toshio@office.tut.ac.jp
0532-44-6564, 6565

